

MAY 18 2018

Index No. J-19

# CERTIFICATE OF LOCATION OF GOVERNMENT CORNER

NORTH QUARTER Corner of Section 14, Township 108 N, Range 39 W

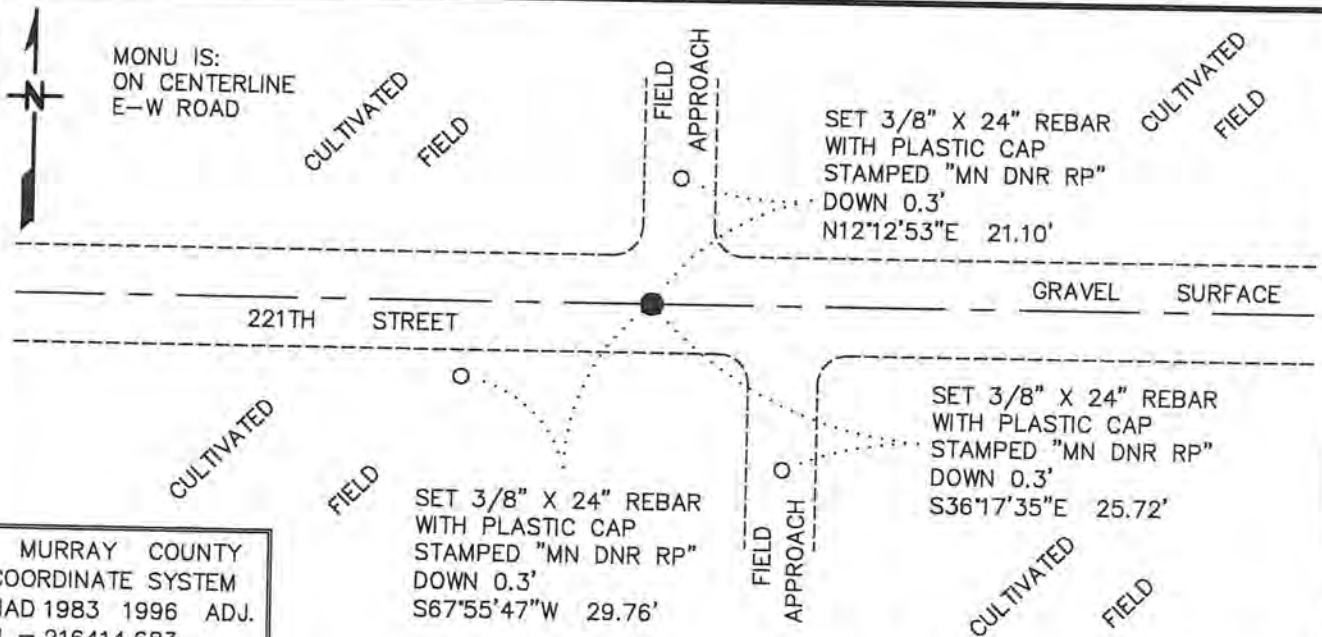
5TH Principal Meridian, State of Minnesota, County of MURRAY

At the corner location shown on the sketch:

On 9/12/2017 found a 5" X 6" X 8" STONE, DOWN 0.4'

left monument as found,  lowered monument,  removed monument (explain)

On 9/12/2017 Placed a 3/4" X 24" REBAR WITH PLASTIC CAP STAMPED "MN DNR LS 17003", DOWN 0.5', IN PLACE OF FOUND STONE



MURRAY COUNTY  
COORDINATE SYSTEM  
NAD 1983 1996 ADJ.  
N = 216414.683  
E = 571892.773

BEARINGS ARE COUNTY ORIENTATION

Statement of evidence for this corner location is on back of this page.

FEBRUARY 2018  
WMA 02039

I hereby certify that this plan, specification, or report was prepared by me or under my direct supervision and that I am a duly Licensed Land Surveyor under the laws of the State of Minnesota.

SIGNATURE Bruce W. Shepherd DATE 5/15/10 License Number 17003  
BRUCE W SHEPPERD

North Quarter Corner of Section 14, Township 108 North, Range 39 West

The DNR Division of Lands and Minerals contacted the following for survey information:

Website - [mngeo.state.mn.us](http://mngeo.state.mn.us) for GLO plat and field notes

Website - [murray-countymn.com](http://murray-countymn.com) for section and quarter section corner information

Murray County Recorder's Office

Zieske Land Surveying, Inc. of Windom

Madsen Land Surveying, Inc. of Fairmont

Bonnema Runke Stern, Inc. of Willmar

1861 U.S. General Land Office notes, obtained from [mngeo.state.mn.us](http://mngeo.state.mn.us), show the corner marked with a post, in a mound.

No Surveyor's Record Book A, page 250 obtained from the Murray County Recorder's  
Date Office, which is also on [murray-countymn.com](http://murray-countymn.com), shows a government corner at the corner. The corner is shown:

2666.0 feet from the northeast corner of Section 14

2667.0 feet from the northeast corner of Section 14

2666.0 feet from the northeast corner of Section 15

2667.0 feet from the northeast corner of Section 15

Survey states – *see page 240*. The following note is on page 240:

Surveyed by D.L. Bigham, County Surveyor of Redwood County, Minn. June 1901. Plotted by him July 5, 1901.

Original plat on file in office of Town Clerk of Holly Township.

This record made by J.R. Johnston, Co. Surveyor of Murray Co from original plat. June 12, 1915.

1928 June 23, Surveyor's Record Book A, page 253 obtained from the Murray County Recorder's Office, which is also on [murray-countymn.com](http://murray-countymn.com), shows a stone at the corner but does not indicate if it was found or set. The corner is shown:

about 6 feet east of fence line on north and south lines

2666.0 feet from the northeast corner of Section 14

2666.0 feet from the northeast corner of Section 15

2017 September 12, the DNR Division of Lands and Minerals dug with a backhoe in the area of the corner and found a 5 inch by 6 inch by 8 inch stone, down 0.4 of a foot. Then removed the stone and replaced it with a ¾ inch by 24 inch rebar with a plastic cap stamped "MN DNR LS 17003" and found it to be:

a) on the center line of east-west 221<sup>st</sup> Street (gravel surface)

b) 2668.99 feet from the northeast corner of Section 15

c) 2670.6 feet from a metal attraction found in the area of the northeast corner of Section 14

Analysis of the above information led the DNR Division of Lands and Minerals to conclude that the ¾ inch by 24 inch rebar with a plastic cap stamped "MN DNR LS 17003" set in place of a found 5 inch by 6 inch by 8 inch stone marks the location of the corner.